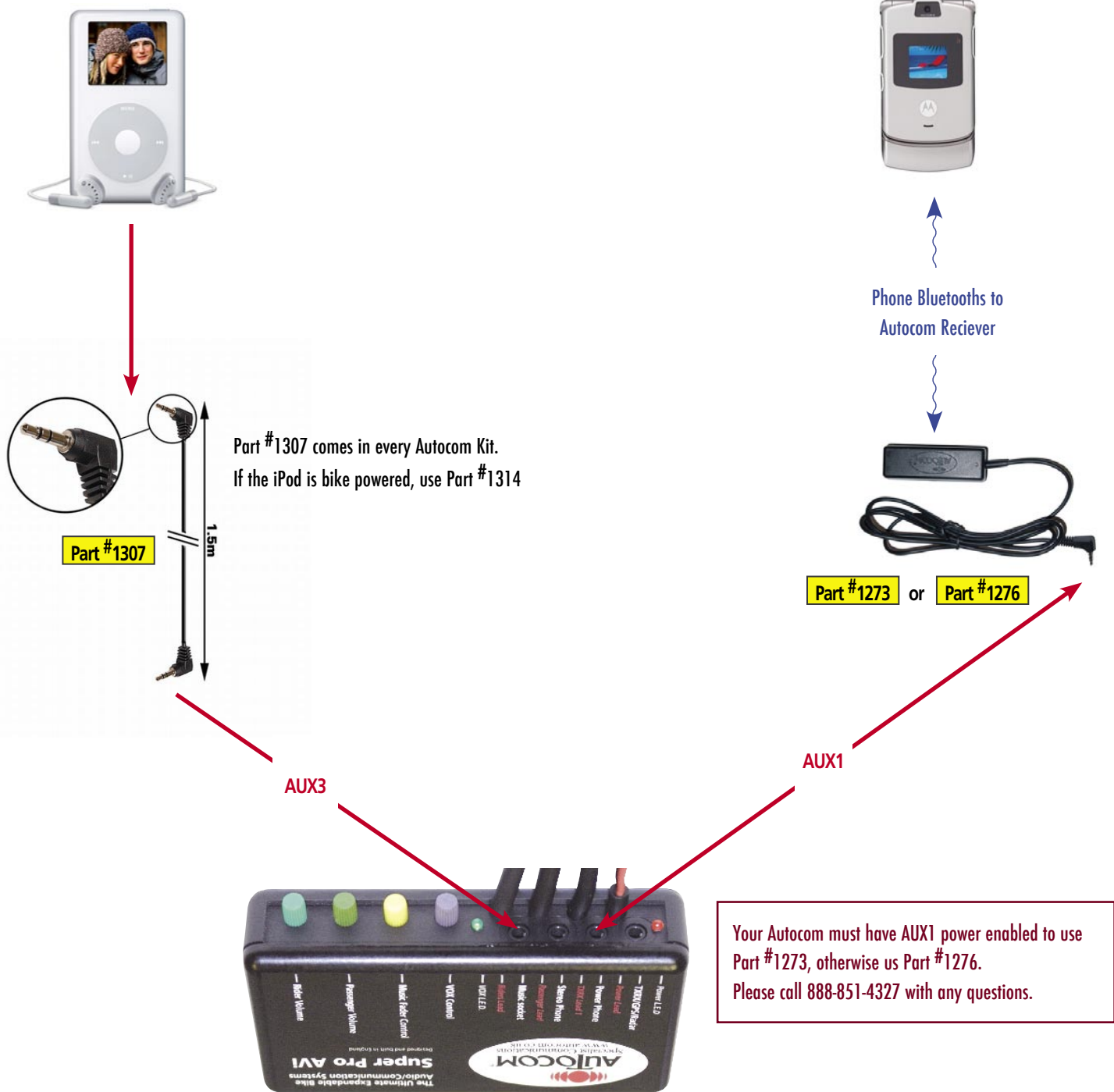


# Setup: Bluetooth Cell and iPod



View more sample configurations and also download instructions for connecting the Zumo 550 to your Autocom at [www.autocomamerica.com](http://www.autocomamerica.com)

This is only one example of an Autocom configuration. Each individual motorcyclist will configure their Autocom system to the way they want to ride. If you would like help configuring your Autocom system please call 888-851-4327 to speak with a TopGear Representative.